

Product description

For some security applications, the RCC7R cabinet requires an attack-proof kit. The ATCK provides a two-minute attack delay time.

The ATCK lets you replace the standard, hinged outer door with a steel cover that has no window. The cover attaches to the RCC7R with hardened steel screws and front corner locks.

The ATCK also includes special knockout plugs that secure unused knockouts.

Specifications

Size: 23.65 x 25.85 x 3.86 in (60.07 x 65.66 x 9.80 cm)

Material: 14 gauge steel

Finish: Red textured enamel

Key locks: 4

Screws:

10-32 x 1 in machine screws: 4

10-32 x 2 in machine screws: 10

Compatible with 3-RCC7R cabinet only

Installation instructions

1. Disconnect all power before installing.
2. Remove the existing door from the cabinet.
3. Place the ATCK cover over the cabinet and lock the four key locks. The key locks hold the cover in place.
4. Use the ATCK cover as a template to mark screw holes on all sides of the cabinet (fourteen holes). (Newer cabinets include the screw holes.)
5. Remove the cover and drill all marked holes with a 1/4-inch drill bit.
6. Remove any unused knockouts and insert knockout plugs. (See Figure 2.)
7. Attach a grounding strap from the ground strap stud in the cabinet to the outer door. (See Figure 3.)
8. Place the ATCK cover onto the cabinet and lock the four key locks.
8. Using the fourteen 10-32 screws provided, attach the cover. Make sure to observe proper placement of the one-inch and two-inch screws. (See Figure 1.)

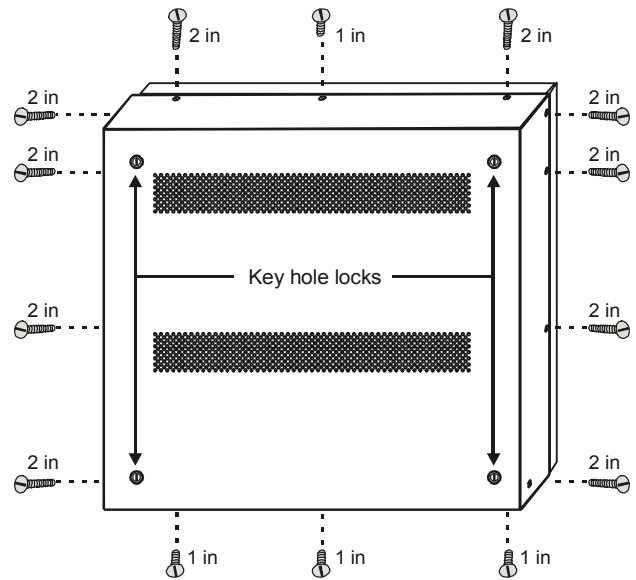


Figure 1: Screw locations

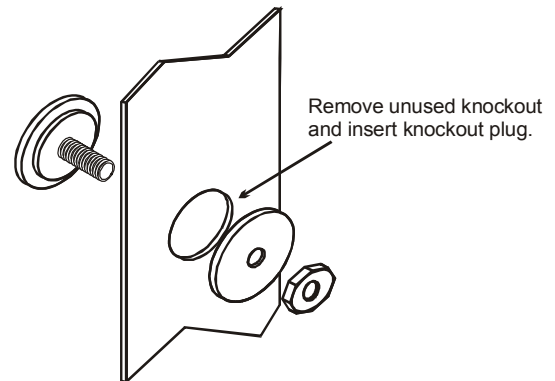


Figure 2: Knockout plug

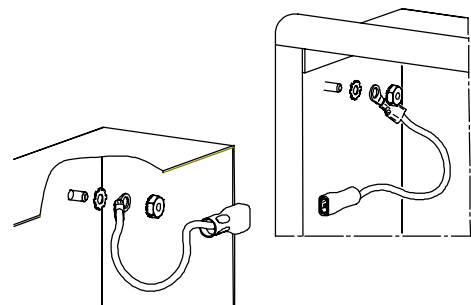


Figure 3: Ground strap

Warnings

Disconnect all power before installing or drilling holes.

When drilling holes into the cabinet, make sure not to drill into any existing wires or hardware.